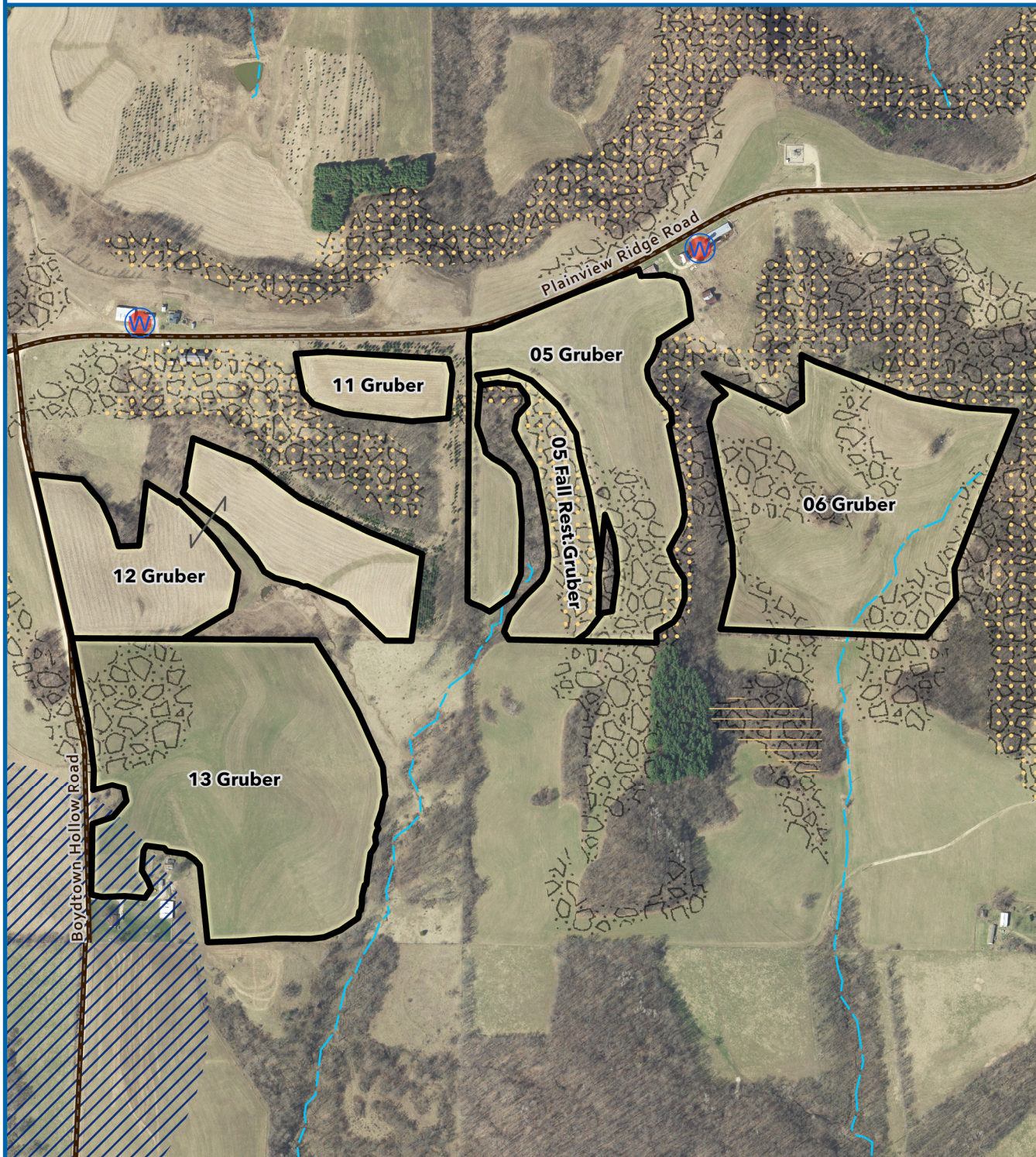
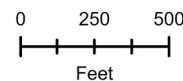


Non-Winter Restrictions Map

Grower: Gruber Livestock South

Field(s): Gruber 5, 6, 11, 12, 13

Crawford County, WI



Legend

Fields

Roads

Intermittent Stream

Private Well

No App.: Private Well Buffer 50 ft

SWQMA: Incorporate within 72 hours (see attachment)

N Restricted Soil (P): High Permeability: See Attachment

N Restricted Soil (R): Bedrock Within 20 in.: See Attachment

Bedrock <5 ft: See Attachment

Aerial Photo: WROC 2020

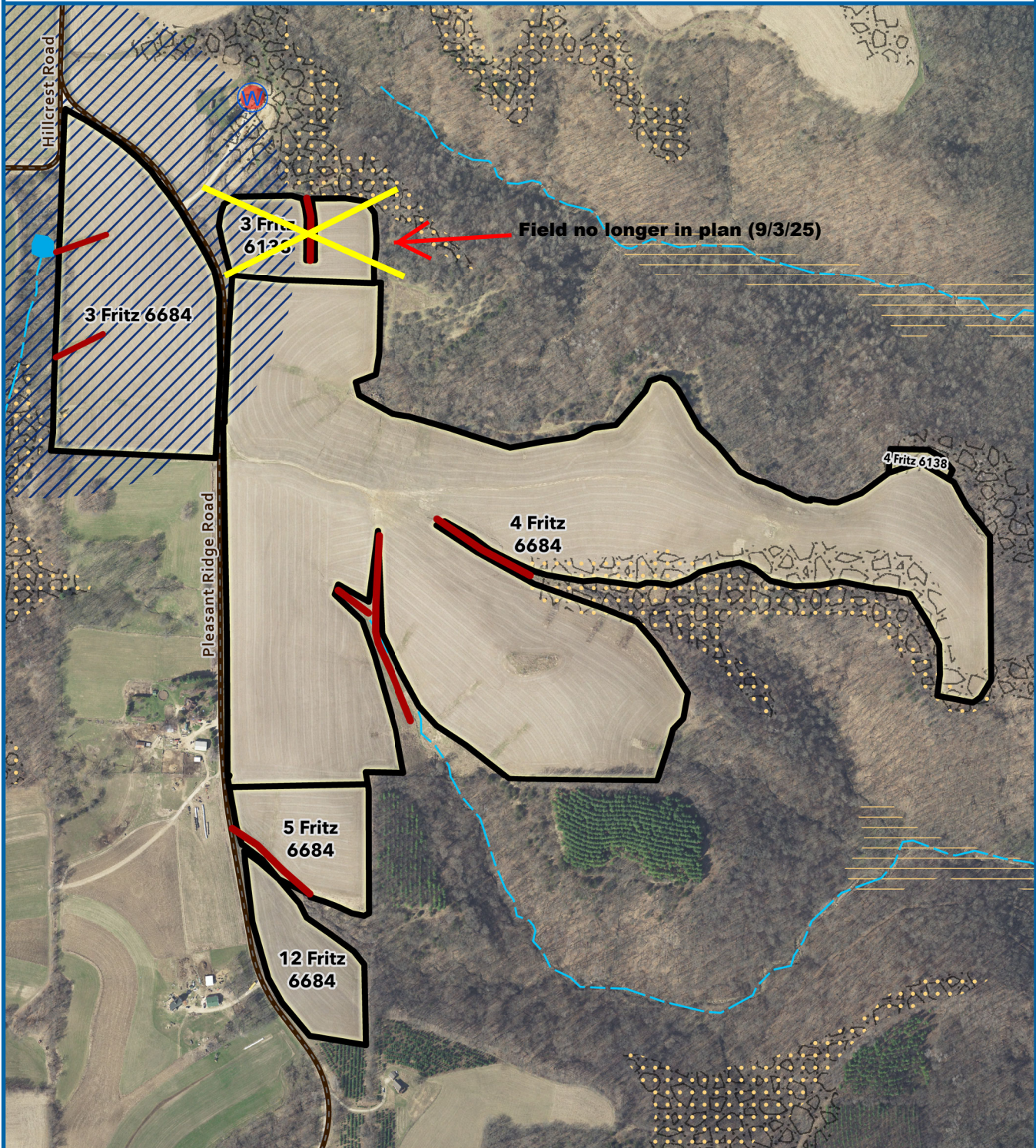
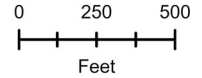
Date Exported: 7/21/2025

Non-Winter Restrictions Map

Grower: Gruber Livestock South

Field(s): Fritz 3, 4, 5, 12

Crawford County, WI



Legend

- | | | | |
|---------------------------|---------------------|--|--|
| Fields | Waterbodies | No App.: Private Well Buffer 50 ft | N Restricted Soil (R): Bedrock Within 20 in.: See Attachment |
| Roads | Intermittent Stream | SWQMA: Incorporate within 72 hours (see attachment) | Bedrock <5 ft: See Attachment |
| Concentrated Flow Channel | Private Well | N Restricted Soil (P): High Permeability: See Attachment | |

Aerial Photo: WROC 2020
Date Exported: 7/21/2025